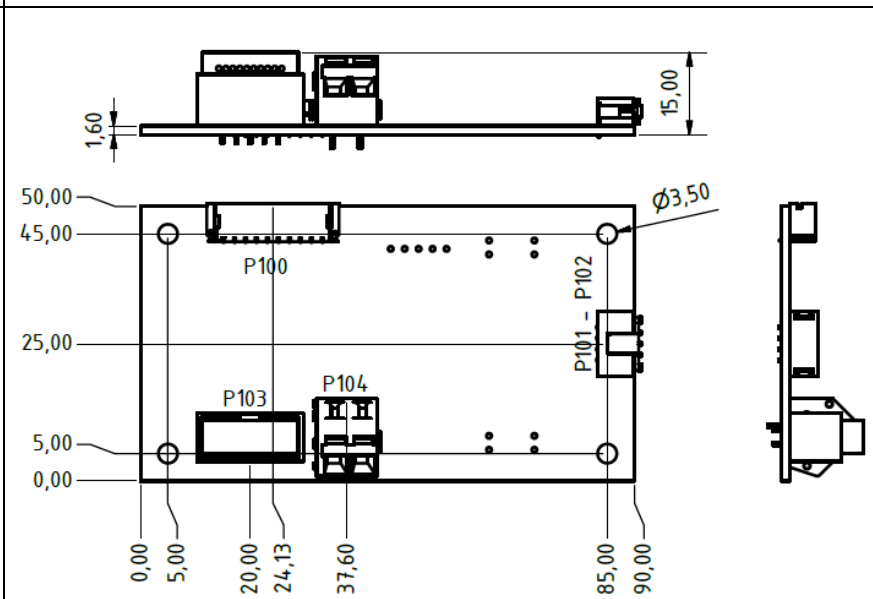
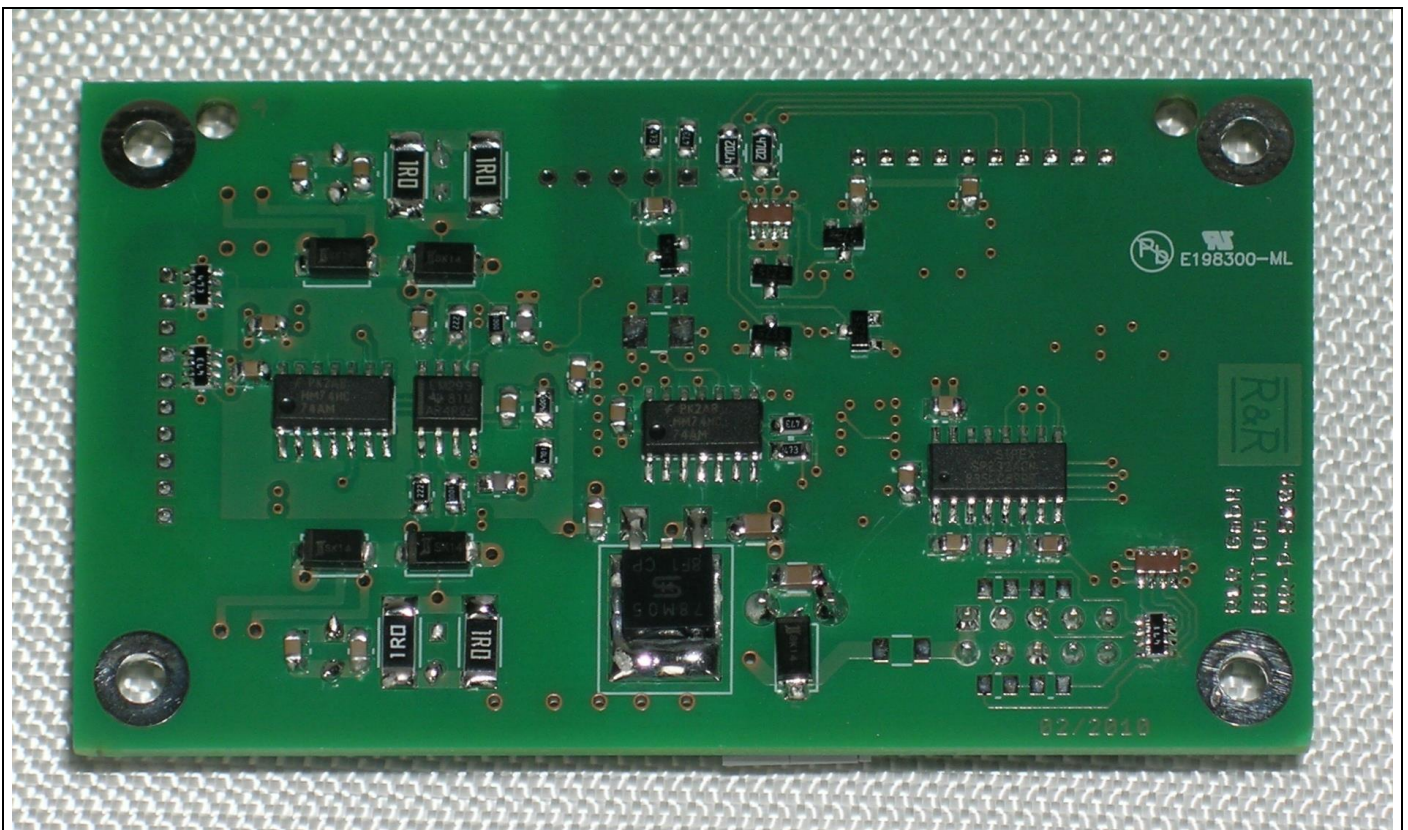


RRP500 stepper motor controller top view

## R&R RR-P-500 stepper motor controller

Interface	RS232C or RS422
Input	4 x 0V/5V or 0V/24V DC
Analogue input	2 x 0–5V 10bit
Motor interface	2phase stepper motor up to 24V/500mA
Limit switches	2 x debounced
Dimensions	90mm x 50mm x 15 mm





RR-P-500 stepper motor controller bottom view

**PIN100 - INPUTS**

Connector type	JST 10 pin series PH	
<b>PIN#</b>	<b>DESCRIPTION 1</b>	<b>DESCRIPTION 2</b>
1	+5V	
2	ANALOGUE 1	0 – 5V 10BIT
3	ANALOGUE 2	0 – 5V 10 BIT
4	GND	
5	+5V	
6	DIGITAL IN 1	0/5V OR 0/24V
7	DIGITAL IN 2	0/5V OR 0/24V
8	DIGITAL IN 3	0/5V OR 0/24V
9	DIGITAL IN 4	0/5V OR 0/24V
10	GND	

<b>PIN102 - MOTOR</b>		
Connector type	JST 10 pin series PH	
<b>PIN#</b>	<b>DESCRIPTION 1</b>	<b>DESCRIPTION 2</b>
1	PHASE 1 +	
2	PHASE 1 -	
3	PHASE 2 +	
4	PHASE 2 -	
5	COM 1	LIMIT SWITCH 1 COMMON
6	NC 1	LIMIT SWITCH 1 NORMALLY OPEN
7	NO 1	LIMIT SWITCH 1 NORMALLY CLOSED
8	COM 2	LIMIT SWITCH 2 COMMON
9	NC 2	LIMIT SWITCH 2 NORMALLY OPEN
10	NO 2	LIMIT SWITCH 2 NORMALLY CLOSED

<b>PIN103 – RS422</b>		
Connector type	10 pin IDC-connector Grid 2,54mm	
<b>PIN#</b>	<b>DESCRIPTION 1</b>	<b>DESCRIPTION 2</b>
1	V-IN	24V DC
2	V-IN	24V DC
3	Y	TRANSMIT DATA +
4	A	RECEIVE DATA +
5	Z	TRANSMIT DATA -
6	B	RECEIVE DATA -
7	NC	NOT CONNECTED
8	NC	NOT CONNECTED
9	GND	0V DC
10	GND	0V DC

<b>PIN103 – RS232c</b>		
Connector type	10 pin IDC-connector Grid 2,54mm	
<b>PIN#</b>	<b>DESCRIPTION 1</b>	<b>DESCRIPTION 2</b>
1	V-in	24V DC
2	V-in	24V DC
3	RX	RECEIVE DATA
4	RTS	REQUEST TO SEND
5	TX	TRANSMIT DATA
6	CTS	CLEAR TO SEND
7	NC	NOT CONNECTED
8	NC	NOT CONNECTED
9	GND	0V DC
10	GND	0V DC

<b>PIN104 – POWER SUPPLY</b>		
Connector type	CAGE CLAMP TERMINAL BLOCK	
<b>PIN#</b>	<b>DESCRIPTION 1</b>	<b>DESCRIPTION 2</b>
1	24V DC	
2	GND	