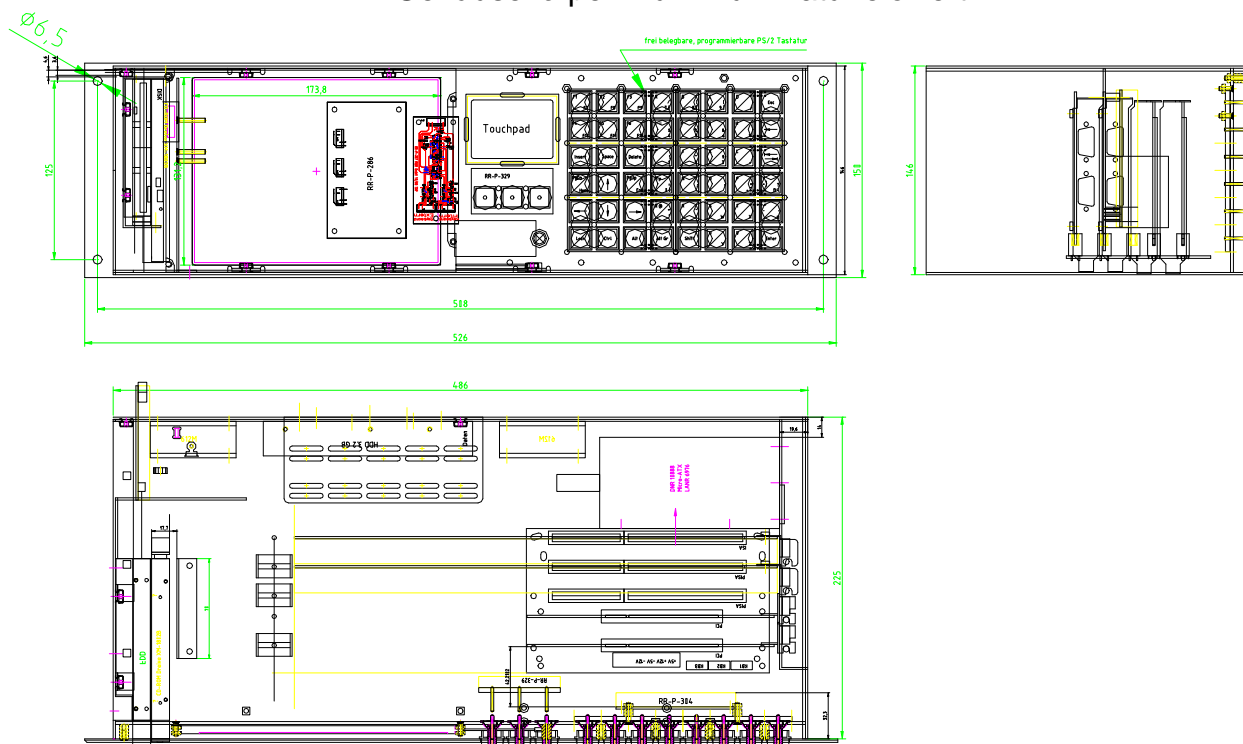




R&R Industrie-PC IPC105

Gehäuse

Frontplatte Aluminium rot oder blau eloxiert
Gehäusekörper Aluminium natur eloxiert



BxHxT

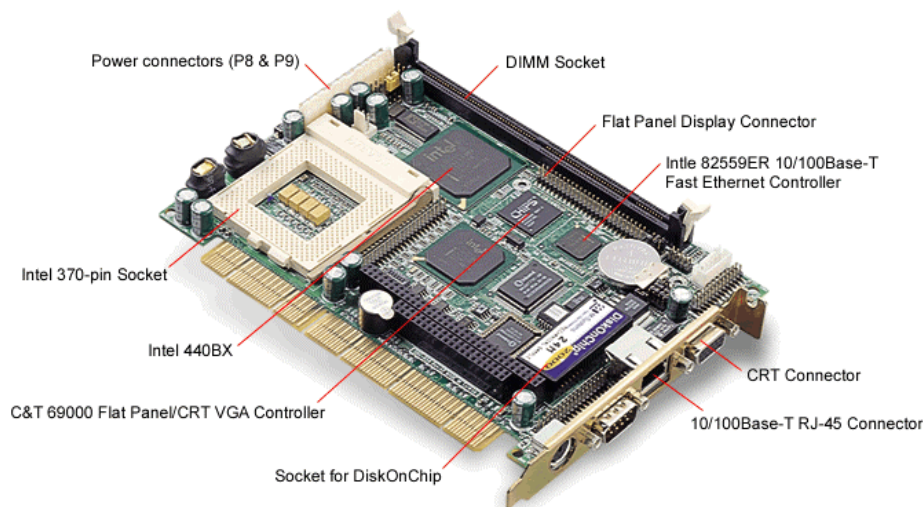
Ca. 526 x 150 x 225 mm

Display

hinter Schutzscheibe

- 170.4 x 127,8 mm [8.4"]
- 800 x 600 Pixel SVGA format
- 150 cd/m²
- Built-in long life CCFT backlight

Rechner
PISA-Slot CPU
 z.B Typ SBC658



Features

- Supports both Intel FC-370 Pentium III, Celeron, and compatible CPUs
 - C&T 69000 LCD controller supports 36-bit TFT panels
 - Intel 82559ER 10/100Base-T Fast Ethernet
 - Supports DiskOnChip® (SSD) up to 288MB
 - PISA bus interface
 - PC/104 expansion connector
- Available In Q3

CPU

Intel FC-370 Pentium III (Coppermine), Celeron, and compatible CPUs (with system bus frequencies of 66/100MHz)

CPU type

Intel Socket 370

Bus interface

PISA bus

BIOS

Award 256KB FLASH BIOS

Chipset

Intel 440BX

I/O Chipset

Winbond W83977. Fully 16-bit I/O decoded

Memory

Onboard one 168-pin DIMM socket supports up to 256 Mbytes SDRAM

Enhanced IDE

Supports two IDE devices. Supports Ultra DMA/33 mode with data transfer rate up to 33MB/sec.

FDD interface

Supports two floppy disk drives, 5.25" (360KB and 1.2MB) and/or 3.5" (720KB, 1.44MB, and 2.88MB)

Parallel port

One bi-directional parallel port. Supports SPP, ECP, and EPP modes

Serial port

One RS-232 and one RS-232/422/485 serial port. Ports can be configured as COM1, COM2, COM3, COM4, or disabled individually. (16C550 equivalent)

IR interface

Supports one IrDA Tx/Rx header

KB/Mouse

connector 6-pin mini DIN connector supports PC/AT keyboard and PS/2 mouse

USB connectors

5 x 2 header onboard supports dual USB ports

Battery

Lithium battery for data retention

Watchdog

timer Can generate a system reset, IRQ15 or NMI. Software selectable time-out interval (32 sec. ~ 254.5 min., 1 min./step)

DMA 7

DMA channels (8237 equivalent)

Interrupt 15

interrupt levels (8259 equivalent)

Power management

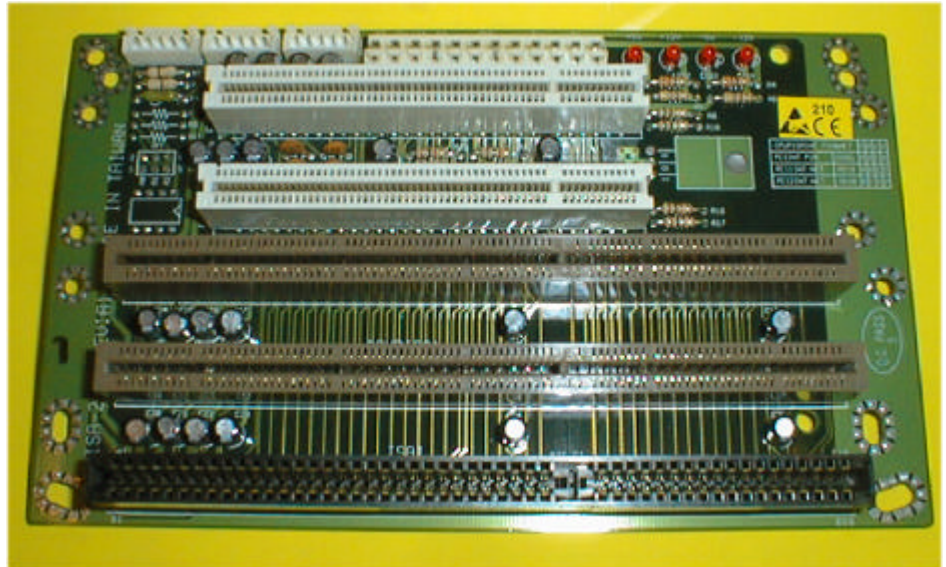
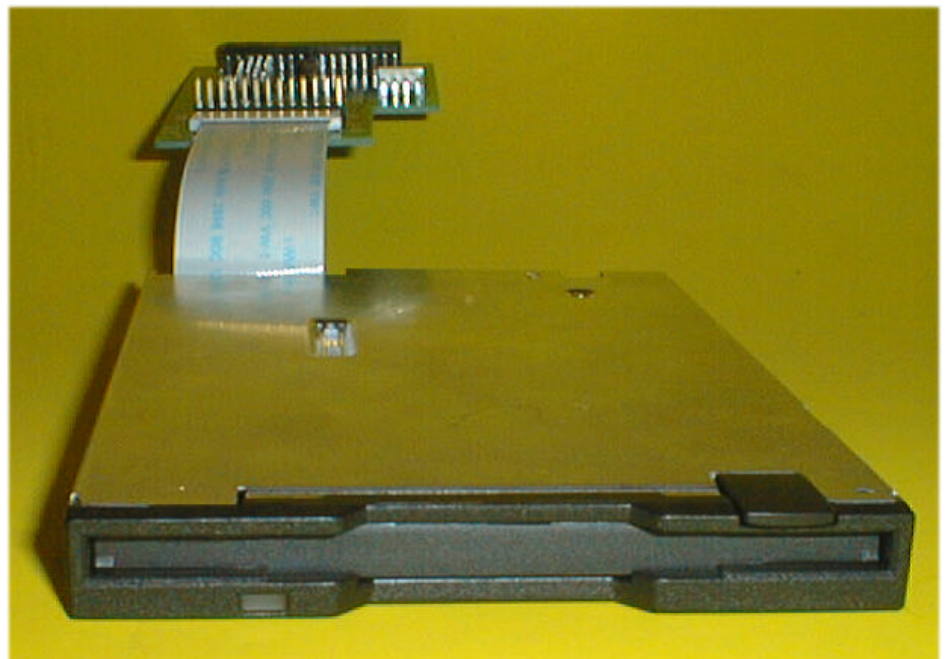
I/O peripheral devices support power saving and doze/standby/suspend modes. APM 1.2 compliant

R&R Industrie-PC IPC105

Flat Panel/CRT Interface	Chipset C&T 69000 (mBGA) Display memory Built-in 2MB SDRAM Display type Supports non-interlaced CRT and LCD (TFT, DSTN, and MONO) displays. Can display both CRT and Flat Panel simultaneously Resolution Up to 1024x768@64K colors (CRT/LCD simultaneous display)
Ethernet Interface	Chipset Intel 82559ER Base-T Fast Ethernet controller Ethernet interface Onboard 10/100Base-T RJ-45 connector. Optional Remote Boot ROM function
SSD Interface	One 32-pin DIP socket supports M-Systems DiskOnChip® 2000 series up to 288MB
Expansion Interface	PC/104 connector One 16-bit 104-pin connector onboard
Mechanical and Environmental	Power supply voltage +5V (4.75V to 5.25V) +12V (11.4V to 12.6V) Operating temperature 32 to 140° F (0 to 60° C) Board Size 7.3 in (L) x 4.8 in (W) (185mm x 122mm) Weight 0.3Kg
Betriebssystem	Windows 2000

Backplane

2 PCI, 2 PISA, 1 x ISA

**FDD**

1,44 MB, Bauhöhe 1/2, incl. Adapter für Standard-Schnittstelle

HDD

Aktuelle 3 1/2" EIDE-Festplatte
z.B.10,2 GB, 9,5 ms

CD-ROM



24fache Geschwindigkeit, 512 kB Puffer, 3,6 MB/sec, 130 ms

Tastatur

Vandalensicher Hubtastatur Typ V5
Kontakt und Führungselemente im gedichteten Raum
Zn-Druckguß, trommelvernickelt

Tastenkappe



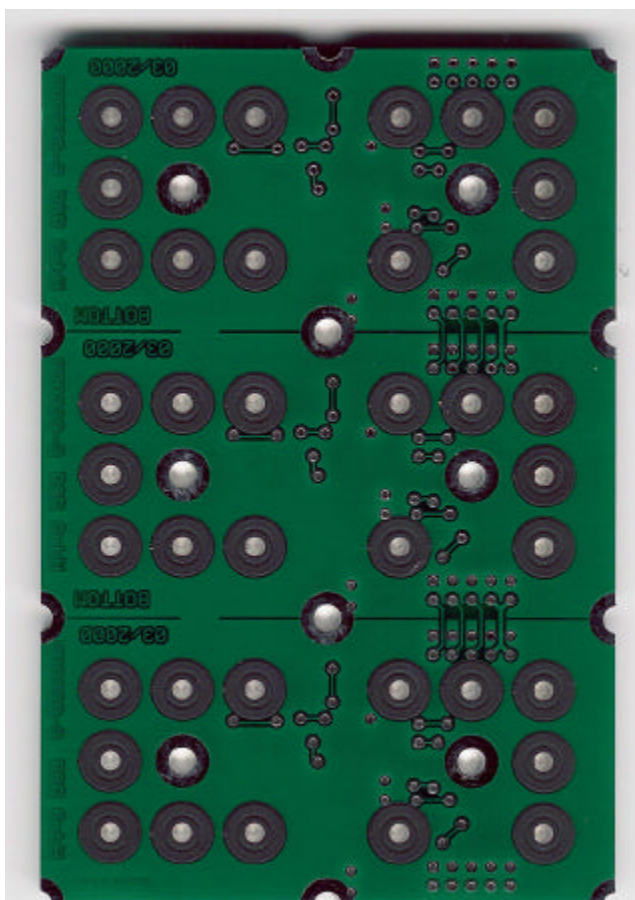
Beschriftung

Al Einlegeschildchen graviert
Farben: natur, schwarz, blau, rot, grün, gold

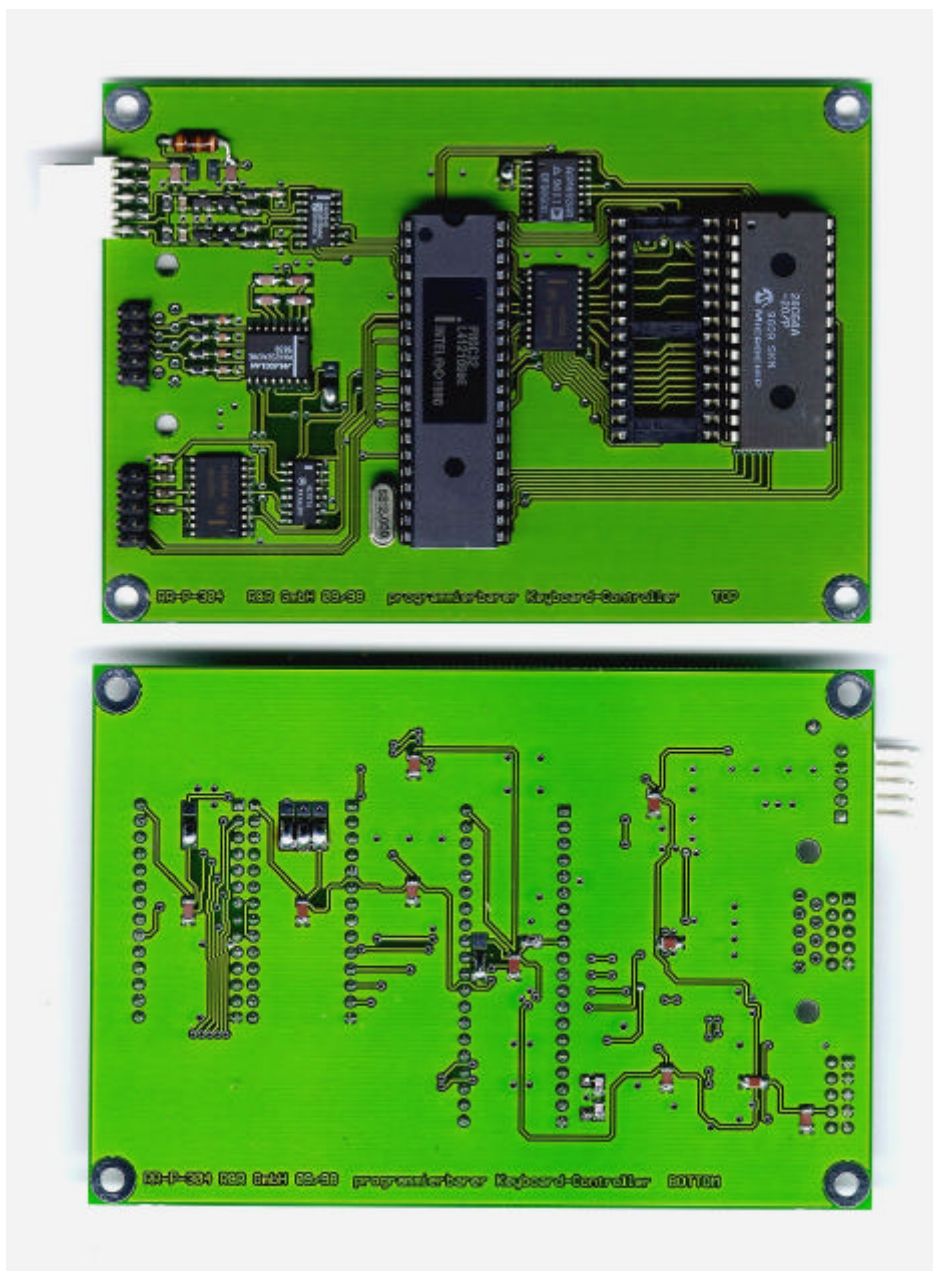
Schaltelemente

Wahlweise
Einzelschaltpunkt DNR 3374 Betätigungskraft 1 N, Hub 3 mm
Einzelschaltpunkt DNR 4715 Betätigungskraft 1.5 N, Hub 1.2 mm
Einzelschaltpunkt DNR 4045 Betätigungskraft 3 N, Hub 3 mm
Lebensdauer > 3 Millionen Schaltzyklen

Tastaturplatine RR-P-339
Schieberegisterinterface
nahtlos anreihbar in jeder
Achse
kleinstes Modul 4 x 2 Tasten



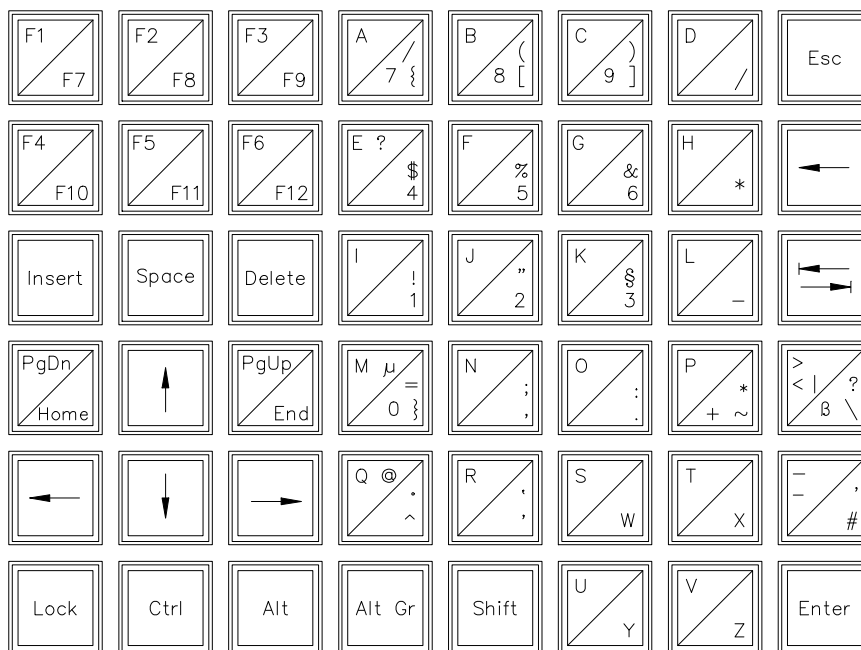
Tastaturcontroller RR-P-304



Keyboardweiche
Mausweiche
Maus

Automatische Erkennung der externen Tastatur
Automatische Erkennung der externen Maus
Touchpad mit PS/2 Interface

Tastaturbelegung horizontal



Tastaturbelegung vertikal

