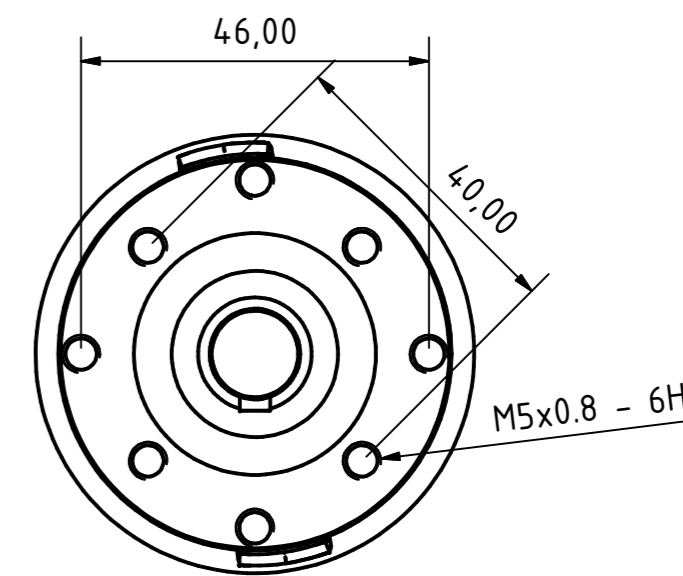
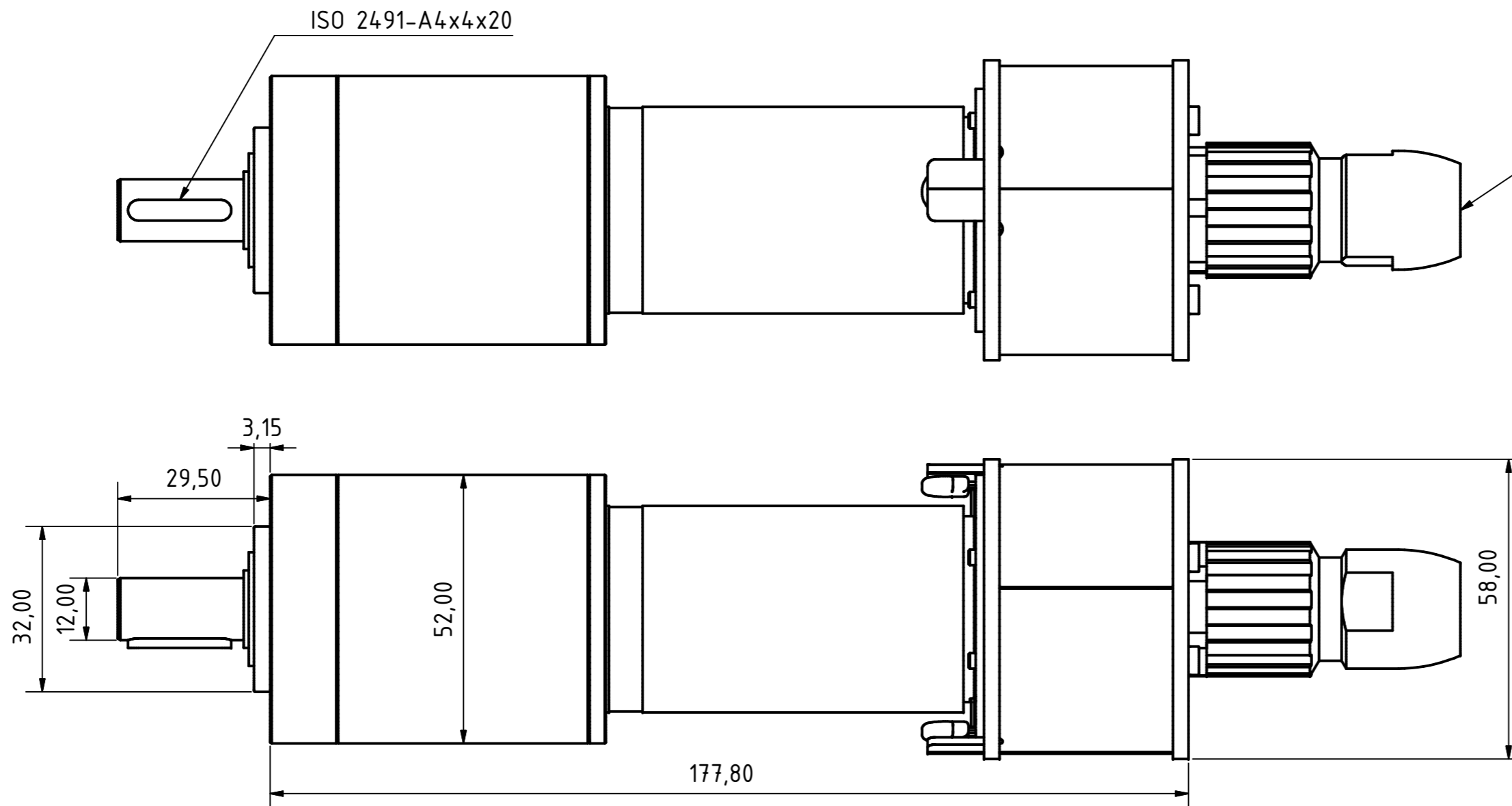
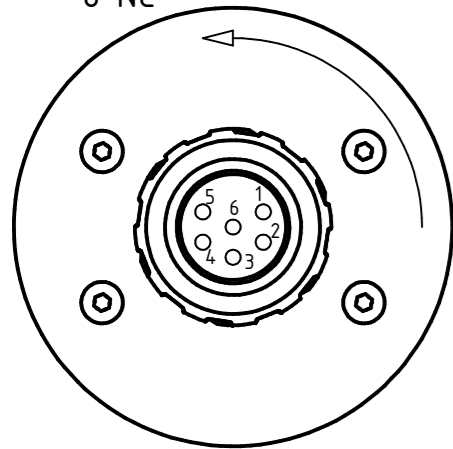


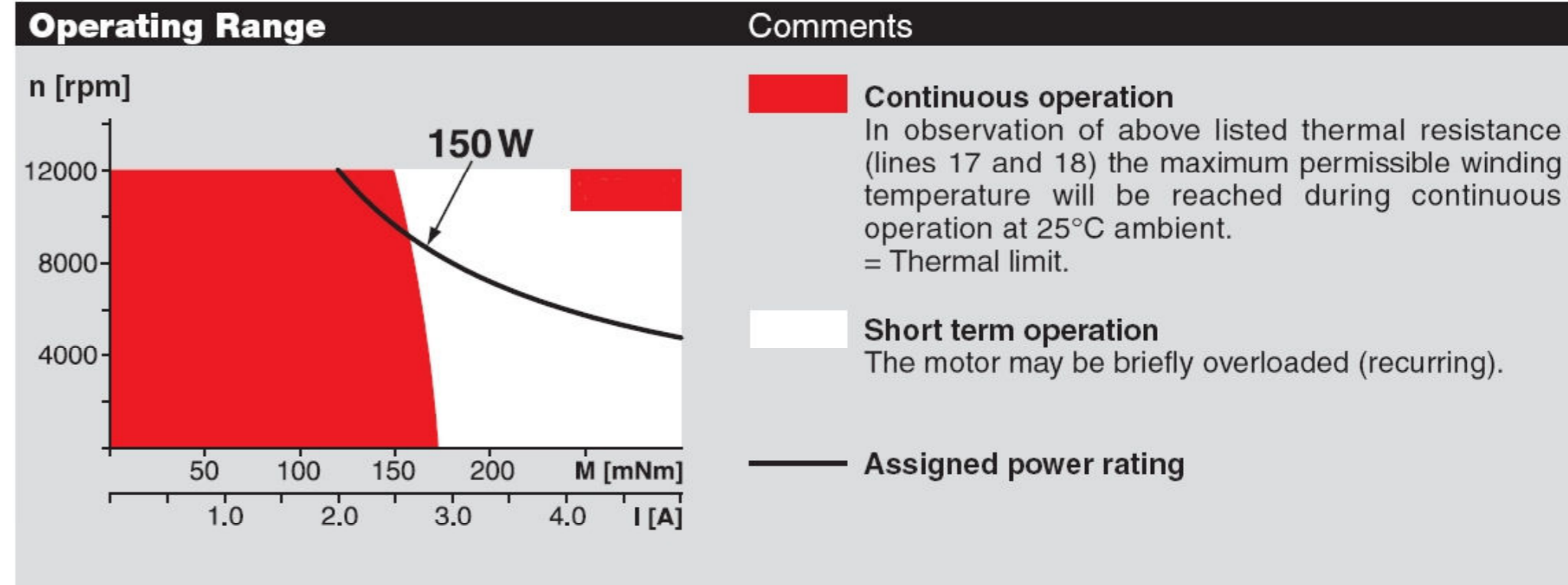
planetary gearhead straight teeth  
 2 stages  
 bearing at output: preloaded ball bearings  
 axial play at axial load < 5N 0 mm  
 > 5N max. 0.3 mm  
 max. permissible force for press fits 500 N  
 max. permissible axial load 200N  
 max radial load 12 mm from flange 700N  
 recommended input speed < 6000 U/min  
 recommended temperature range -20°C ... + 100°C  
 extended area as option: -35°C ... + 100°C  
 weight approx. 0,62 kg  
 max. continuous Torque gear head 15 Nm  
 intermittently permissible torque at gear output 22,5 Nm  
 average backlash no load 0,8°  
 max efficiency approx. 83%

nominal torque motor gear head combination: approx. 4,3 Nm  
 max. speed motor gear head combination approx. 230 rpm  
 speed constant: approx 6 rpm /V  
 torque constant motor gear head combination approx. 1568 mNm/A  
 max. permissible starting current approx. 14,4 A  
 nominal efficiency motor gear head combination approx. 76,4%  
 nominal voltage 38V DC  
 nominal current ( max. continuous current) approx. 3,12A  
 nominal electrical power approx 120 W (at 38V DC)  
 nominal mechanical power appr. 90 W  
 weight approx. 1,3kg

connector:  
 Coninverse RC-4 M16  
 female BL-06S  
 1 +  
 2 -  
 3 NC  
 4 NC  
 5 NC  
 6 NC



the motor MGK108 is similar to MGK102  
 same motor, same interface unit RR-P478  
 same EMC



motor: RE40  
 metall housing  
 weight approx. 0,48 kg  
 thermal resistance housing-ambient 4.65K/W  
 thermal resistance winding-housing 1.93 K/W  
 thermal time constant winding 41.6s  
 thermal time constant motor 1120s  
 Ambient temperatur -30 .. + 100°C  
 max. permissible winding temperature +155°C  
 Continuous operation:  
 In observaton of above listed thermal resistance  
 the maximum permissible winding temperatur will be reached during  
 continuous operation at 25°C ambient = thermal limit

All rights reserved for these documents DIN 34  
 Für diese Unterlagen behalten wir uns alle Rechte vor (DIN 34)

Ges. f. Rationalisierung und Rechentechnik mbH		Ob der Eck 4 78148 Gütenbach			
Gezeichnet	28.04.2008	ps	Datum	Name	
Kontrolliert			Norm		
Motor gearhead combination MGK108					
dnr17713_E					1
					A2
Status	Änderungen	Datum	Name		